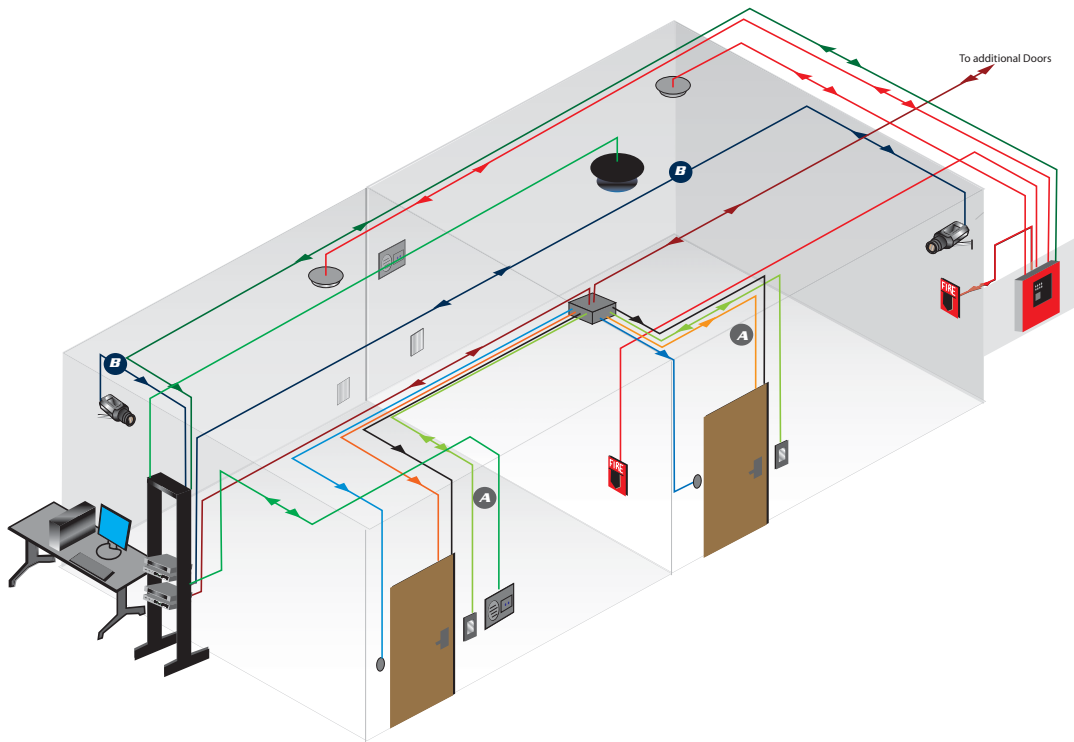


# Special Application Cables

**Special... Not complicated.** Many installations require specialized cables to either make the installation easier or to meet specific system requirements. Being a leading manufacturer of low voltage cables, West Penn Wire has the capabilities to meet your special cable component needs. We provide specialized PTZ security cables, composite access control cables, and other cables such as AV component cabling. If your system requires a specialized cable, count on West Penn Wire to engineer, design, manufacture, and deliver exactly what you need.



## FEATURES

- Flexible Access Control Composite Design
- Composite AV Cables
- Specialized Speaker Cables
- Lickity Split Designs
- PTZ Composite Cable Design
- Obstruction LED Lighting Cables

**New:** WP128P  
 AC251822B  
 AC251822B3P  
 AQC3125

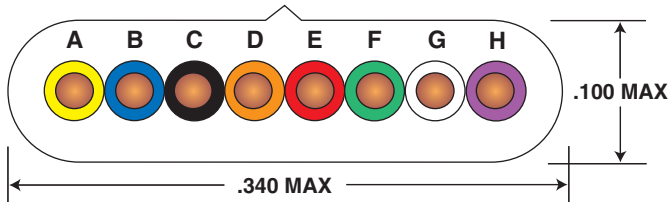
## MINI INDEX

<b>A</b>	Special Application Cables	
	Flat Parallel Cables (Plenum & Non-Plenum.....	180
	V/Cat -Video over UTP Cables .....	181
	PTZ Security Cables .....	182-183
	Audio/ Video Composite Cables .....	184
	Access Control Composite Cables.....	185
	Obstruction LED Lighting Cable.....	186
<b>B</b>		

800-245-4964 • www.westpenn-wpw.com

# Special Application Cables

## Flat Parallel Cable



### Description:

- ASTM Bare Copper • Plenum and Non-Plenum Construction • Unshielded Construction • UL listed for code compliance

### Applications:

- Power-Limited Control Circuits

### Rating:

- NEC Type CL2
- (UL) Listed
- Flame Rating: UL1685

Standard spool size 1000ft.

Catalog No.	No. of Cond.	Conductor Type & Nom. D.C.R	Insulation Type & Thickness	Shielding	Jacket Type & Thickness	Nom. O.D.	NEC Type	Nom. Capacitance	Jacket Color
			Inches		Inches				
WP37123	6	24 AWG Solid BC 26.1 Ω/Mft	.0065	None	.024	.090 x .250	CL2	--	Gray
WP37127	8	24 AWG Solid BC 26.1 Ω/Mft	.0065	None	.030	.100 x .340	CL2	--	Gray

### Ratings:

- NEC Type CL2P
- (UL) or (ETL)us Listed
- Flame Rating: NFPA 262 Smoke & Flame Test

Catalog No.	No. of Cond.	Conductor Type & Nom. D.C.R	Insulation Type & Thickness	Shielding	Jacket Type & Thickness	Nom. O.D.	UL Type	Nom. Capacitance	Jacket Color
			Inches		Inches				
WP37125	6	24 AWG Solid BC 26.1 Ω/Mft	.0065	None	.024	.090 x .250	CL2P	--	Gray
WP37129	8	24 AWG Solid BC 26.1 Ω/Mft	.0065	None	.030	.100 x .340	CL2P	--	Gray

8 Cond.Color Code	
A	Yellow
B	Blue
C	Black
D	Orange
E	Red
F	Green
G	White
H	Violet

6 Cond.Color Code	
A	Blue
B	Black
C	Orange
D	Red
E	Green
F	White

800-245-4964 • www.westpenn-wpw.com

# Special Application Cables

## V-Cat- Video Over UTP Cables 2 Pair + 2 Conductors - Siamese Construction Non-Plenum and Plenum



### Applications:

- Video Over UTP

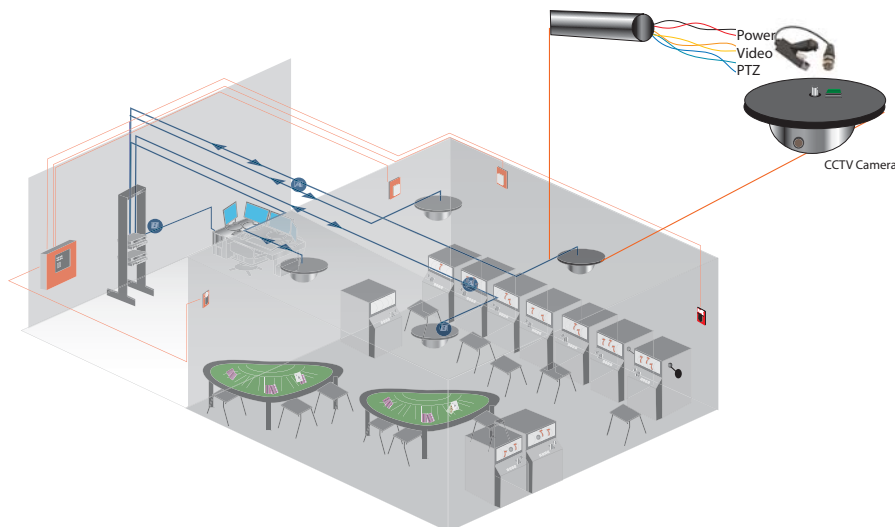
Standard pool size 1000ft.

Catalog No.	NEC Type	Cable Type & Description	Dielectric Type	Jacket type	Nom. O.D.	Nom. Capacitance 2 Pair	Nom. VP 2 Pr.	Nom. Imp.Ω 2 Pair	Jacket Color
					Inches				
CC2418	CM	2 Pair 24 AWG Solid Category 5E Type UTP + 2 Cond. 18 AWG unshielded	Thermo-Plastic	PVC	.180 x .340	14 pf/ft	66%	100Ω	Gray
CC252418 Plenum	CMP	2 Pair 24 AWG Solid Category 5E Type UTP + 2 Cond. 18 AWG Unshielded	Plenum Thermo-Plastic	Plenum Thermo-plastic	.185 x .345	14 pf/ft	66%	100Ω	Gray
CC2416	CM	2 Pair 24 AWG Solid Category 5E Type UTP + 2 Cond. 16 AWG Unshielded	Thermo-Plastic	PVC	.192 x .355	14 pf/ft	69%	100Ω	Gray
CC252416 Plenum	CMP	2 Pair 24 AWG Solid Category 5E Type UTP + 2 Cond. 16 AWG Unshielded	Plenum Thermo-Plastic	Plenum Thermo-plastic	.190 x .350	14 pf/ft	69%	100Ω	Gray

### Applications:

- **Pair 1** - Category 5E type 100Ω - Used for Video Transmission -Blue/White-Blue
- **Pair 2** - Category 5E type 100Ω - Used for Video Transmission or Data Transmission, such as RS-422 or RS-485 or PTZ (Pan, Tilt, Zoom Controls) -White/Orange- Orange
- **Two Conductors**- 18 or 16 Awg. Solid bare copper conductors- Used for Power to the camera- Black and Red

[Complete List of Baluns- Pages 156-158](#)

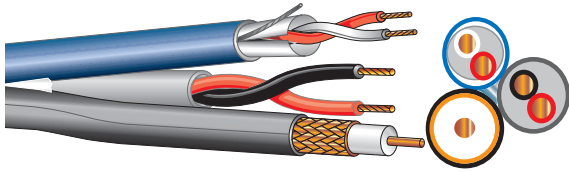


800-245-4964 • www.westpenn-wpw.com

# Special Application Cables

## PTZ Security Video

### Minimax & RG59/U Type Composite PTZ (Pan Tilt Zoom)



#### Applications:

- CCTV/ Data/ Power
- Security Baseband Video
- UL Listed: CM

Standard pool size 1000ft.

Catalog No. NEC Type	Cable Types	Conductor Type & Nom. D.C.R	Insulation Type & Thickness Inches	Shielding & % Coverage	Jacket Type	Nom. O.D. Inches	Nom. Capacitance	Nom. VP	Nom. Imp. Ω	Jacket Color
PTZ825	CCTV Coaxial Minimax	25 AWG (Solid) BC 30 Ω/M'	Gas Inj. PE† .085	Bare Copper Braid 95%	PVC	.146	16.2 pf/ft	82%	75Ω	Black
	Data Control Cable	1 Pair 22 AWG (7x30) TC	PP† Insulation .008	Al. Foil 100% with drain wire	PVC	.135	34 pf/ft* 67 pf/ft**	66%	55Ω	Blue
CM	Power Control Cable	1 Pair 18 AWG (7x26) BC	PVC .008	None	PVC	.155	--	--	--	Gray

PTZ825 - Nom. O.D. .375"

Catalog No. NEC Type	Cable Types	Conductor Type & Nom. D.C.R	Insulation Type & Thickness Inches	Shielding & % Coverage	Jacket Type	Nom. O.D. Inches	Nom. Capacitance	Nom. VP	Nom. Imp. Ω	Jacket Color
PTZ815	CCTV Coaxial RG59/U	20 AWG (Solid) BC 10.1 Ω/M'	Gas Inj. PE† .142 + Tape Barrier	Bare Copper Braid 95%	PVC	.232	16.2 pf/ft	82%	75Ω	Black
	Data Control Cable	1 Pair 18 AWG (7x26) TC	PE† Insulation .018	Al. Foil 100% with drain wire	PVC	.222	24 pf/ft* 44 pf/ft**	66%	50Ω	Blue
CM	Power Control Cable	1 Pair 18 AWG (7x26) BC	PVC .008	None	PVC	.155	--	--	--	Gray

PTZ815 - Nom. O.D. .451"

Cable Types	Conductor Colors	Jacket Colors
CCTV Coaxial	--	Black
PTZ825 Data Control Cable	1.Black, 2. Red	Blue
PTZ815 Data Control Cable	1.Black, 2. Red	Blue
Power Control Cable	1. Black, 2. Red	Gray

#### Notes:

- Standard Spool size 1000ft, spools are one piece, but lengths may vary +/- 10%
- †- Gas Injected Polyethylene
- 100% Sweep Tested
- PE- Polyethylene
- PP- Polypropylene



# Special Application Cables

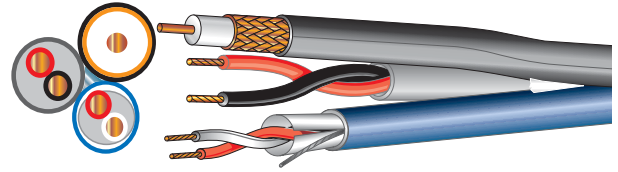
## PTZ Security Video

### Minimax & RG59/U Type Composite PTZ (Pan Tilt Zoom)

#### Plenum

#### Applications:

- CCTV/ Data/ Power
- Security Baseband Video
- Flame Rating: NFPA 262 - CMP



Standard spool size 1000ft.

Catalog No. NEC Type	Cable Types	Conductor Type & Nom. D.C.R	Insulation Type & Thickness Inches	Shielding & % Coverage	Jacket Type	Nom. O.D. Inches	Nom. Capacitance	Nom. VP	Nom. Imp. Ω	Jacket Color
PTZ25825	CCTV Coaxial Minimax	25 AWG (Solid) BC 30 Ω/M	Foam FEP .078	Bare Copper Braid 95%	Plenum PVC	.146	16.2 pf/ft	82%	75Ω	Black
	Data Control Cable	1 Pair 22 AWG (7x30) TC	FEP .010	Al. Foil 100% with drain wire	Plenum PVC	.120	25 pf/ft* 45 pf/ft**	69%	55Ω	Blue
CMP	Power Control Cable	1 Pair 18 AWG (7x26) BC	Plenum PVC .008	None	Plenum PVC	.138	--	--	--	Gray

PTZ25825 - Nom. O.D. .342"

Catalog No. NEC Type	Cable Types	Conductor Type & Nom. D.C.R	Insulation Type & Thickness Inches	Shielding & % Coverage	Jacket Type	Nom. O.D. Inches	Nom. Capacitance	Nom. VP	Nom. Imp. Ω	Jacket Color
PTZ25815	CCTV Coaxial RG59/U	20 AWG (Solid) BC 10.1 Ω/M'	Foam FEP .138 + Tape Barrier	Bare Copper Braid 95%	Plenum PVC	.207	16.2 pf/ft	82%	75Ω	Black
	Data Control Cable	1 Pair 18 AWG (7x26) TC	FEP .010	100% Al. Foil with drain wire	Plenum PVC	.148	30 pf/ft* 54 pf/ft**	69%	45Ω	Blue
CMP	Power Control Cable	1 Pair 18 AWG (7x26) BC	Plenum PVC .008	None	Plenum PVC	.154	--	--	--	Gray

PTZ25815 - Nom. O.D. .362"

Cable Types	Conductor Colors	Jacket Colors
CCTV Coaxial	--	Black
Data Control Cable	1.Black, 2. Red	Blue
Power Control Cable	1. Black, 2. Red	Gray

#### Notes:

Standard Spool size 1000ft, spools are one piece, but lengths may vary +/- 10%

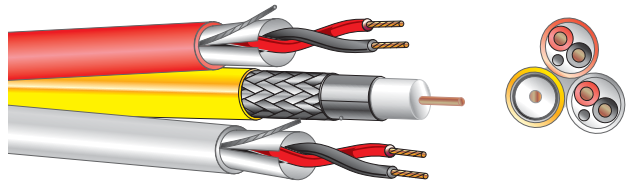
PE- Polyethylene

Bifoil is an aluminum polyester aluminum tape with 100% coverage

100% Sweep Tested



# Special Application Cables



## Composite Audio/ Video Cables

### Applications:

- Audio and Video

Standard pool size 1000ft.

Catalog No.	Cable Types	Application	Connectors	NEC Type	Nom. Jacket O.D. & Color
LSAV	1- MiniMax SDI Coaxial Cable 2- 1 Pair 22 AWG Shielded Cables	Video	CN-CSRCA-25 19-1207- Red	CM	.316" Unjacketed Lickity Split Bondled Cable
		Audio	19-1268-Black		
LS25AV	1- MiniMax SDI PlenumCoaxial Cable 2- 1 Pair 22 AWG Shielded Cables- Plenum	Video	CN-CSRCA-25 19-1207- Red	CMP	.300" Unjacketed Lickity Split Bondled Cable
		Audio	19-1268-Black		

Cable Types	Conductor Colors	Jacket Colors
Video Minimax SDI	--	Yellow
Audio Pair 1	1. Black, 2. Red	White
Audio Pair 2	1. Black, 2. Red	Red

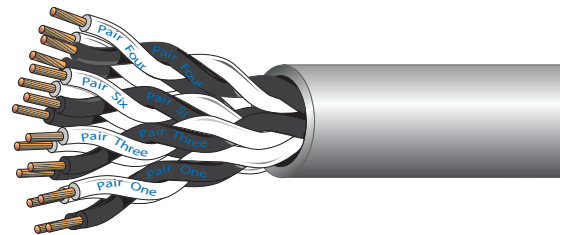


800-245-4964 • www.westpenn-wpw.com

## Multi-Pair - Speaker Cable

### Applications:

- Audio- Speaker Snake Cable



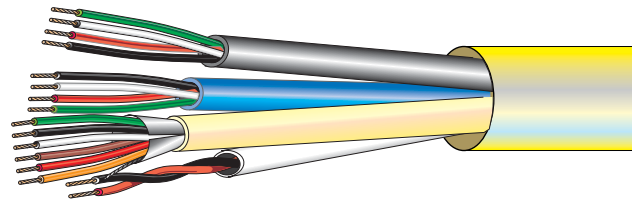
Catalog No.	No. of Pairs	Conductor Type & Nom. D.C.R	Insulation Type & Thickness	Shielding	Jacket Type & Thickness	Nom. O.D. Inches	NEC Type	Nom. Capacitance	Jacket Color
			Inches		Inches				
WP128P	8	12 AWG (19x25) BC 1.7 Ω/Mft	PVC .015"	None	PVC .050"	.825"	CL3R	33.5pf/ft	Gray

# Special Application Cables

## Composite Access Control Cables

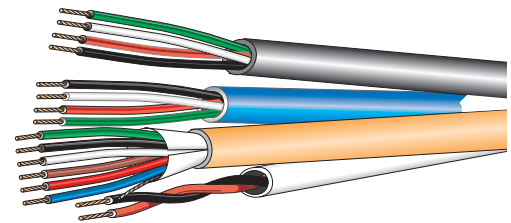
### Applications:

- Access Control Systems



Standard pool size 1000ft.

Catalog No.	Cable Types	Application	NEC Type	Nom. Jacket O.D. & Color
AC1822	2 Cond 22 AWG 4 Cond. 18 AWG 4 Cond. 22 AWG	Door Contact Lock Power Request to Exit Card Reader	CM	.440"
	6 Cond. 22 AWG Shielded			Overall PVC Jacket Blue
AC251822B	2 Cond 22 AWG 4 Cond. 18 AWG 4 Cond. 22 AWG	Door Contact Lock Power Request to Exit Card Reader	CMP	.440"
	6 Cond. 22 AWG Shielded			Overall Plenum PVC Jacket Yellow
AC251822B3P	2 Cond 22 AWG 4 Cond. 18 AWG 4 Cond. 22 AWG	Door Contact Lock Power Request to Exit Card Reader	CMP	.440"
	3 Pair 22 AWG Shielded			Overall Plenum PVC Jacket Yellow



Standard pool size 1000ft.

LS1822	2 Cond 22 AWG 4 Cond. 18 AWG 4 Cond. 22 AWG 6 Cond. 22 AWG Shielded	Door Contact Lock Power Request to Exit Card Reader	CM	.430" Unjacketed Lickity Split Bonded Cable
LS251822	2 Cond 22 AWG 4 Cond. 18 AWG 4 Cond. 22 AWG 6 Cond. 22 AWG Shielded	Door Contact Lock Power Request to Exit Card Reader	CMP	.430" Unjacketed Lickity Split Bonded Cable

Cable Types	Conductor Colors	Jacket Colors
Door Contact	1. Black, 2. Red	White
Lock Power	1. Black, 2. Red, 3. White, 4. Green	Gray
Request to Exit	1. Black, 2. Red, 3. White, 4. Green	Blue
Card Reader	1. Black, 2. Red, 3. White, 4. Green 5. Brown, 6. Blue	Orange



### Notes:

Standard Spool size 1000ft, spools are one piece, but lengths may vary +/- 10%  
PE- Polyethylene

Bifoil is an aluminum polyester aluminum tape with 100% coverage  
100% Sweep Tested

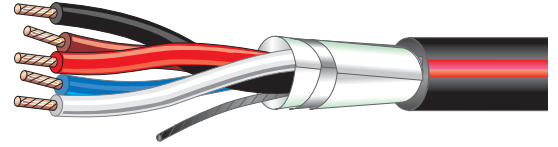
# Special Application Cables

## Obstruction LED Lighting Cable

Indoor/Outdoor

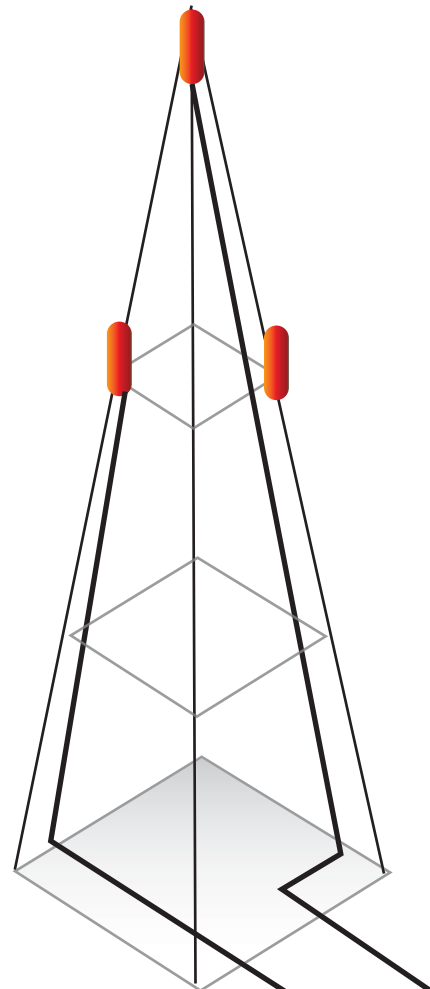
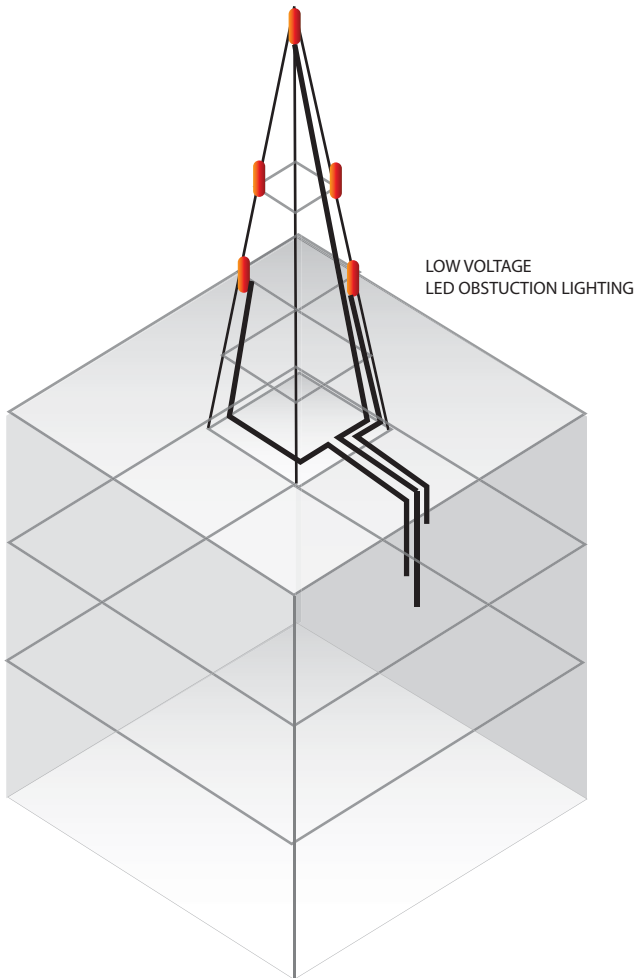
Rating:

• NEC Type CM



Catalog No.	No. of Cond.	Conductor Type & Nom. D.C.R.	Insulation Type & Thickness	Shielding	Jacket Type & Thickness	Nom. O.D. Inches	NEC Type	Nom. Capacitance	Jacket Color
			Inches		Inches				
AQC3125	5	12 AWG	.020	100% Al. Foil Aquaseal Tape	PVC .040	.545	CL3	--	Black Red Stripe

Color Code	
AQC3125	BK, RD, WH, BL, BN
Jacket Color	
Black with red stripe	



800-245-4964 • www.westpenn-wpw.com