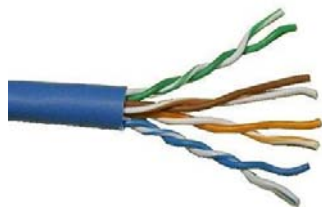


Technical Data Sheet- Category 5E Network Plenum

WEST PENN WIRE



2833 West Chestnut Street
Washington, PA 15301
Toll Free: (800) 245-4964
Fax: (724) 222-6420
www.westpenn-wpw.com

| | |
|---------------------|---|
| PART NUMBER: | 254245 |
| DESCRIPTION: | 24 AWG.- 4 PAIR Solid bare copper conductors, unshielded with an overall plenum jacket. |
| NEC RATING: | CMP |
| APPROVALS: | (UL) C(UL) Listed or c(ETL)us Listed |
| APPLICATION: | Indoor Plenum- Category 5E Applications- Ethernet, IP Cameras, Digital Integration |

Construction Parameters:

| | |
|--------------------------|-----------------------------|
| Conductor | 24 AWG Bare Copper |
| Stranding | Solid |
| Number of Conductors | 8 (4 Pair) |
| Insulation | Dual Insulation FEP - .008" |
| Shield | None |
| Drain | None |
| Jacket Material | Plenum PVC |
| Overall Cable Diameter | 0.190" Nom. |
| Approximate Cable Weight | 25 Lbs/1M' Nom. |
| Flame Rating | NFPA 262 |

Electrical & Environmental Properties:

| | |
|---------------------------------------|---|
| Operating Temperature Rating | -20°C To +60°C |
| Operating Voltage Rating | 300 V RMS |
| DC Resistance per Conductor @ 20deg C | 9.38 Ohms/1M' Nom. |
| Mutual Capacitance | 14pf/ft Nominal |
| Nominal Impedance | 100 Ohms+/-15% (1-100Mhz) |
| Velocity of Propagation | 66% Nominal |
| Delay Skew | 25ns/100m MAX |
| Propagation Delay (Skew) | 2.2ns/100m |
| Standards | TIA/EIA568-B.2 |
| Insulation Colors | 1.Blue/White-Blue, 2. Orange/White-Orange 3. Green/White-Green, 4. Brown/White-Brown |
| Jacket Color | Gray, White, Blue |
| RoHS Compliant | Yes |

Electrical Specifications:

| | | | | | |
|-------------------------|------|------|------|------|------|
| Frequency: MHz | 1 | 10 | 25 | 100 | 200 |
| Insertion Loss: dB/100m | 1.8 | 5.8 | 9.3 | 19.6 | 28.8 |
| NEXT: dB/100m | 80 | 64 | 59 | 50 | 46 |
| ACR: dB/100m | 70.3 | 50.9 | 41.1 | 40.3 | 35.8 |
| PS-NEXT: dB/100m | 73 | 58 | 52 | 43 | 40 |
| PS-ACR: dB/100m | 66.3 | 46.9 | 37.1 | 17.3 | 3.3 |
| ELFEXT: dB/100m | 67.8 | 47.8 | 39.8 | 27.8 | 21.8 |
| PS-ELFEXT: dB/100m | 64.8 | 25 | 36.8 | 24.8 | 18.8 |
| RL: dB | 20 | 25 | 24.3 | 20.1 | 18 |

Mechanical Properties:

| | |
|-------------------------------|---------|
| Max. Recommended Pull Tension | 25 lbs. |
| Min. Bend Radius (Install) | 1" Min. |

Accessories:

Connectors: Jacks

| | |
|----------|--------|
| AX101310 | Black |
| AX101315 | Blue |
| AX101314 | Green |
| AX101312 | Red |
| AX101313 | Yellow |
| AX101309 | White |
| AX101311 | Orange |
| AX101308 | Ivory |

Connectors: Plugs

| | |
|--------|----------------|
| 32-EZP | Cat 5E EZ RJ45 |
|--------|----------------|

Tools:

| | |
|-----------|---------------------|
| TL-135 | 110 Punch down tool |
| TL-EZRJ45 | EZ Crimp Tool |

Cable Assemblies:

| | |
|-----------|---|
| WP66xx-3 | 3ft- Replace xx- 70(Gray), 72(Blue), 74(Red) |
| WP66xx-7 | 7ft- Replace xx- 70(Gray), 72(Blue), 74(Red) |
| WP66xx-10 | 10ft- Replace xx- 70(Gray), 72(Blue), 74(Red) |
| WP66xx-15 | 15ft- Replace xx- 70(Gray), 72(Blue), 74(Red) |
| WP66xx-25 | 25ft- Replace xx- 70(Gray), 72(Blue), 74(Red) |

Specification Issue Date: 4/09

This document is the property of West Penn Wire.
The information contained herein is considered
Proprietary and not to be reproduced by any means
Without written consent of West Penn Wire

Standard Lengths are 1000ft.
The Jacket is sequentially footmarked.
The information presented here is, to the best of our
knowledge, is true and accurate. However, since
conditions of use are beyond our control, all
recommendations or suggestions are presented
without guarantee or responsibility on our part. We
disclaim all liability in connection with the use of
information contained herein or otherwise.