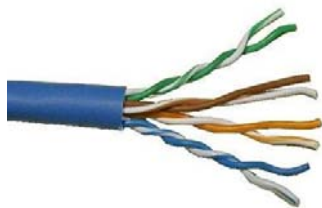


## Technical Data Sheet- Category 6 Network



# WEST PENN WIRE

2833 West Chestnut Street  
Washington, PA 15301  
Toll Free: (800) 245-4964  
Fax: (724) 222-6420  
www.westpenn-wpw.com

---

|                     |   |
|---------------------|---|
| <b>PART NUMBER:</b> | <b>4246</b>   |
| <b>DESCRIPTION:</b> | 23 AWG.- 4 PAIR Solid bare copper conductors, unshielded with an overall jacket.  |
| <b>NEC RATING:</b>  | CMR   |
| <b>APPROVALS:</b>   | (UL) C(UL) Listed or c(ETL)us Listed  |
| <b>APPLICATION:</b> | Indoor - Category 5E Applications- Ethernet, IP Cameras, Digital Integration<br>Meets or exceeds TIA/EIA 568B.2.1 Category 6 Specifications |

---

### Construction Parameters:

|                          |                       |
|--------------------------|-----------------------|
| Conductor                | 23 AWG Bare Copper    |
| Stranding                | Solid                 |
| Number of Conductors     | 8 (4 Pair)            |
| Insulation               | Thermoplastic - .008" |
| Shield                   | None                  |
| Drain                    | None                  |
| Core Separator           | Yes                   |
| Jacket Material          | PVC                   |
| Overall Cable Diameter   | 0.225" Nom.           |
| Approximate Cable Weight | 30 Lbs/1M' Nom.       |
| Flame Rating             | UL1666                |

---

### Electrical & Environmental Properties:

|                                       |   |
|---------------------------------------|---|
| Operating Temperature Rating          | -20°C To +60°C  |
| Operating Voltage Rating              | 300 V RMS   |
| DC Resistance per Conductor @ 20deg C | 7.8 Ohms/100m Nom.  |
| Mutual Capacitance                    | 14pf/ft Nominal   |
| Nominal Impedance                     | 100 Ohms+/-15% (1-100Mhz)   |
| Velocity of Propagation               | 66% Nominal   |
| Delay Skew                            | 45ns/100m MAX   |
| Standards                             | TIA/EIA568-B.2 1  |
| Insulation Colors                     | 1.Blue/White-Blue, 2. Orange/White-Orange<br>3. Green/White-Green, 4. Brown/White-Brown<br>Gray, White, Blue – Other Colors Available<br>Example: 4246-BL |
| Jacket Color                          |   |
| RoHS Compliant                        | Yes   |

## Electrical Specifications:

|                         |      |      |      |      |      |      |
|-------------------------|------|------|------|------|------|------|
| Frequency: MHz          | 1    | 10   | 25   | 100  | 250  | 400  |
| Insertion Loss: dB/100m | 1.8  | 5.7  | 9.1  | 19.0 | 31.5 | 41.3 |
| NEXT: dB/100m           | 74.3 | 59.3 | 53.3 | 44.3 | 38.3 | 35.3 |
| ACR: dB/100m            | 72.3 | 53.3 | 46.3 | 24.5 | 5.5  | --   |
| PS-NEXT: dB/100m        | 72.3 | 57.3 | 51.3 | 42.3 | 36.3 | 33.3 |
| PS-ACR: dB/100m         | 70.3 | 51.3 | 41.8 | 22.5 | 3.5  | --   |
| ELFEXT: dB/100m         | 67.8 | 47.8 | 39.8 | 27.8 | 19.8 | 15.8 |
| PS-ELFEXT: dB/100m      | 64.8 | 44.8 | 36.8 | 24.8 | 16.8 | 12.8 |
| RL: dB                  | 20   | 25   | 24.3 | 20.1 | 17.3 | 15.9 |

|                   |                |
|-------------------|----------------|
| Operating Temp    | -20 C to +60 C |
| Storage Temp      | -20 C to +75 C |
| Installation Temp | 0 C to + 60 C  |
| Delay Skew        | 45ns/100m Max  |

---

## Mechanical Properties:

|                               |         |
|-------------------------------|---------|
| Max. Recommended Pull Tension | 25 lbs. |
| Min. Bend Radius (Install)    | 1.00"   |

## Accessories:

### Connectors: Jacks

|          |        |
|----------|--------|
| AX101318 | Gray   |
| AX101319 | Almond |
| AX101320 | White  |
| AX101321 | Black  |
| AX101322 | Orange |
| AX101323 | Red    |
| AX101324 | Yellow |
| AX101325 | Green  |
| AX101326 | Blue   |
| AX101327 | Purple |

### Connectors: Plugs

|           |               |
|-----------|---------------|
| 32-6198UL | Cat 6         |
| 32-6EZP   | EZ Plug Cat 6 |

### Tools:

|           |                     |
|-----------|---------------------|
| TL-135    | 110 Punch down tool |
| TL-114    | Crimp Tool          |
| TL-EZRJ45 | EZ Plug Tool        |

### Cable Assemblies:

|              |                                   |
|--------------|-----------------------------------|
| WP-4236xx-3  | 3 ft. Replace xx with GY, BL, RD  |
| WP-4236xx-7  | 7 ft. Replace xx with GY, BL, RD  |
| WP-4236xx-10 | 10 ft. Replace xx with GY, BL, RD |
| WP-4236xx-15 | 15 ft. Replace xx with GY, BL, RD |
| WP-4236xx-25 | 25 ft. Replace xx with GY, BL, RD |

Specification Issue Date: 4/09

This document is the property of West Penn Wire.  
The information contained herein is considered  
Proprietary and not to be reproduced by any means  
Without written consent of West Penn Wire

Standard Lengths are 1000ft.  
The Jacket is sequentially footmarked.  
The information presented here is, to the best of our  
knowledge, is true and accurate. However, since  
conditions of use are beyond our control, all  
recommendations or suggestions are presented  
without guarantee or responsibility on our part. We  
disclaim all liability in connection with the use of  
information contained herein or otherwise.