

DIGITAL VIDEO PRODUCTS



- A** **SDI or HD-SDI: Serial Digital Interface:** Set of video standards defined by the SMPTE. SDI is for serial transmission of video and audio over standard RG59/ or RG6/U.
Connector: 75 Ω BNC
- B** **HDMI: High Definition Multimedia Interface:** The signalling process TMDS (Transition-Minimized Differential Signalling) creates three channels digital (RGB). Other signals carry digital audio over the same link.
Connector: 19 pin - Various Style and dimensions
- C** **DVI: Digital Visual Interface:** Uses the same process of video signalling as HDMI. DVI does not carry digital video over the same link.
DVI-A - Analog DVI-I - Analog and Digital DVI-D - Digital
- D** **DisplayPort:** A royalty free digital Interface. This is a lower cost alternative to HDMI. This format carries digital video as well as digital audio.
Connector: 20 pin - Similar to a HDMI Type A and C



WEST PENN WIRE

800-245-4964

www.westpenn-wpw.com



PRODUCT INDEX:

DVI SPLITTERS	1
DVI EXTENDERS	1
DVI CABLE ASSEMBLIES.....	2
DVI AND HDMI ADAPTERS.....	2
CAT 5E CABLES	3
CAT 5E MODULAR PLUGS	3
CAT 5E CONNECTORS/ASSEMBLIES/PANELS.....	4
CAT 6 AND CAT6A CABLES	5
CAT 6 AND CAT6A CONNNECTORS	6
CAT 6 AND CAT6A ASSEMBLIES	7
CAT 6 AND CAT6A PATCH PANELS	8
EZ RUN DVI-D	9

DVI VIDEO PRODUCTS

DVI Products

Splitters

DVI SPLITTERS	
Catalog No.	Description
CN-R05SPL-102	1X2 SPLITTER DVI to RJ45 Jack
CN-R05SPL-104	1X4 SPLITTER DVI to RJ45 Jack

SPECIFICATIONS:

- DVI 1.1 - 4.95Gbps
- Active Receiver: 200ft @ 1024x768XGA
- HDCP Compliant



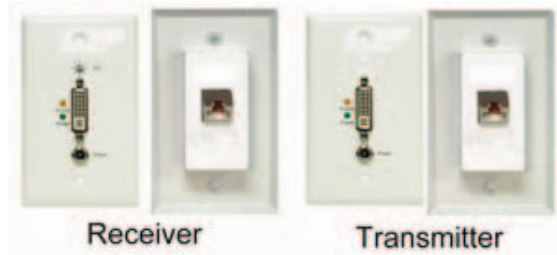
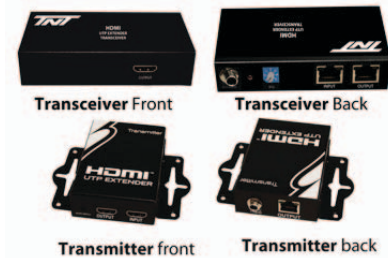
DVI Products

DVI EXTENDERS

DVI EXTENDERS OVER NETWORK CABLES	
Catalog No.	Description
CN-R05EXT-TR	DVI CASCADE TRANCEIVER/TX BOX STYLE-150FT 1920X1080 UP TO 4 CASCADE
CN-R05EXT-TRRX	DVI RECEIVER ONLY -BOX STYLE CASCADE
CN-R05EXTDSL-HP	DVI EXTENDER TX/RX BOX STYLE 150FT 1920X1080
CN-R05EXTDSL-RX	DVI EXTENDER RECEIVER BOX STYLE
CN-R05EXTDSL-TX	DVI EXTENDER TRANSMITTER BOX STYLE
CN-R05EXTLHP-JP	DVI EXTENDER TX/RX WALL PLATE 150FT 1920X1080
CN-R05EXTLRX-JP	DVI EXTENDER RECEIVER WALL PLATE
CN-R05EXTLTX-JP	DVI EXTENDER TRANSMITTER WALL PLATE

DVI EXTENDERS

- Extends the transmission distance up to 200 ft @1024x768 XGA or 150 ft @1920x1080 WUXGA
- Transmitter: 1x DVI female input/1xRJ45 output
- Receiver: 1xRJ45 input/1xDVI female output
- DVI 1.1 compliant (Bandwidth = 4.95 Gbps), Single Link
- Adjustable 8-level EQ control for video quality on receiver
- HDCP Compliant



DVI VIDEO PRODUCTS

DVI Products

DVI Cables - Assemblies



CN-E08DM-DF-XX - DVI-D MALE TO FEMALE - Dual
 Replace xx with: 6,10,15 feet (ft.)

CN-E08DM-DM-XX - DVI-D MALE TO MALE - Dual
 Replace xx with: 6,10,15 feet (ft.)

CN-E08DM-DM-SXX - DVI-D SINGLE LINK MALE TO MALE
 Replace xx with: 6,10,15 feet (ft.)

CN-SHRDVI-xxm DVI-D - SUPER HIGH RESOLUTION

Replace xx with: 1,2,3,5,10,15,20,25,30,40,50,60 meters

- Supports HDMI "Deep Color" HDTV resolutions up to 1080p (12-bit)
- Supports HDMI Category 2 data rates (3.4 Gbit/sec.) lengths up to 7.5 meters
- Supports HDMI data rates up to 2.25 Gbit/sec. lengths up to 40 meters
- Supports PC data rates up to 1.65 Gbit/sec. lengths up to 60 meters
- Supports PC resolutions up to 1600x1200 / 60 Hz and 1920x1200 / 60 Hz
- Heavy-duty 22AWG copper wires for minimum insertion loss
- Ultra-low Skew guarantees unsurpassed digital fidelity
- Triple shielded for superior noise immunity
- Dual UL Ratings: UL13 (CL2) and UL758 (AWM20276)

HDMI Products

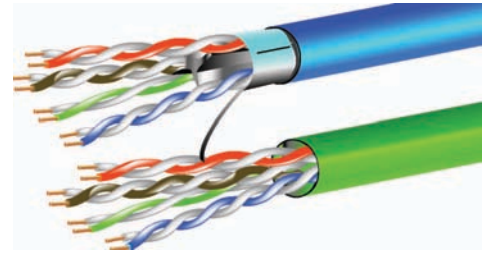
HDMI Adapters and Accessories

HDMI AND DVI ADAPTERS	
Catalog No.	Description
CN-E11HDMI-FF	HDMI F-F ADAPTER
CN-E11HDMI-FFP	HDMI F-F ADAPTER PANEL MOUNT
CN-E11HF-DM	HDMI F - DVI M ADAPTER
CN-E11HM-DF	HDMI M - DVI F ADAPTER
CN-R02SPL-PNL	1RU RACK MOUNT PANEL - 3 SLOTS - USED WITH CASCADE PRODUCTS
CN-R02EXT-PA	POWER ADAPTER



CAT 5E CATEGORY CABLES

Cables Category 5E



Category 5E UTP

Catalog No.	No. of Pairs	Conductor Type & Nom. D.C.R.	Insulation Type & Thickness	Shielding	Jacket Type & Thickness	Nom. O.D.	NEC Type	Nom. Capacitance & Impedance	Jacket Color
			Inches		Inches	Inches			
4245	4 Pair	24 AWG Solid 26 Ω/Mft	Polyolefin	None UTP	PVC	.191	CMR	Nom. Cap. 14 pf/ft* Nom. Imp 100Ω	GY, BL, WH, BK, GN, OR, YE, PK
254245	4 Pair	24 AWG Solid 26 Ω/Mft	Flame Retardant Polyolefin/FEP	None UTP	Plenum Thermo-Plastic	.205	CMP	Nom. Cap. 14 pf/ft* Nom. Imp 100Ω	GY, BL, WH, BK, GN, OR, YE, PK
M57562	4 Pair	24 AWG Solid 26 Ω/Mft	Thermo-Plastic	None UTP Water Blocked	PE UV Resistant	.267	Armored Outdoor	Nom. Cap. 14 pf/ft* Nom. Imp 100Ω	UV Black
M57561	4 Pair	24 AWG Solid 26 Ω/Mft	Thermo-Plastic	None UTP Water Blocked	PE UV Resistant	.255	Outdoor	Nom. Cap. 14 pf/ft* Nom. Imp 100Ω	UV Black
M58762	4 Pair	24 AWG Solid 26 Ω/Mft	Thermo-Plastic	None UTP Water Blocked	Polyolefin UV Resistant	.251	Indoor/Outdoor CM	Nom. Cap. 14 pf/ft* Nom. Imp 100Ω	UV Black
M58145	4 Pair	24 AWG Solid 26 Ω/Mft	Thermo-Plastic	100% AL.foil F/UTP	PVC Thermo-Plastic	.232	CMR	Nom. Cap. 14 pf/ft* Nom. Imp 100Ω	M58145 Gray
M58196									M58196 Blue
M58144	4 Pair	24 AWG Solid 26 Ω/Mft	Flame Retardant Polyolefin/FEP	100% AL.foil F/UTP	Plenum Thermo-Plastic	.218	CMP	Nom. Cap. 14 pf/ft* Nom. Imp 100Ω	M58144 Gray
M58186									M58186 Blue

NEW

Modular Plugs Category 5E



CATEGORY 5E MODULAR PLUGS	
Catalog No.	Description
32-EZP	8 POSITION CAT 5E MODULAR PLUG- BAGS OF 50
32-EZSTP	F/UTP Shielded CAT 5E MODULAR PLUG- BAGS OF 50
TL-EZRJ45	CRIMP TOOL FOR 32-EZP

CAT 5E ACCESSORIES

RJ45 Jacks Category 5E



CATEGORY 5E JACKS	
Catalog No.	Description
KJS458MT-C5E-xx	SignaMax RJ45 Cat5E Jack- xx: WH, BK, BL, GY, GN, OR, RD, YE
KJS458-C5E	SignaMax RJ45 Cat5E Jack - F/UTP Shielded
CATEGORY 5E JACKS - WPW	
AX101310	Cat5E RJ45 Jack - Black
AX101315	Cat5E RJ45 Jack -Blue
AX101314	Cat5E RJ45 Jack -Green
AX101312	Cat5E RJ45 Jack - Red
AX101313	Cat5E RJ45 Jack - Yellow
AX101309	Cat5E RJ45 Jack - White
AX101311	Cat5E RJ45 Jack - Orange
CATEGORY 5E JACKS - Tool less	
CN-705xx	Cat5E Toolless RJ45 Jacks - xx: BK, BL, GN, RD, YE, WH, OR
CATEGORY FEED THRU ADAPTERS	
KRJ45/5S	Category 5E Feed Thur Adapter

Patch Cables Category 5E

CATEGORY 5E ASSEMBLIES - SNAG-PROOF		
Catalog No.	Length	Jacket Colors
C5EC-114CC-3	3 Foot	SIGNAMAX REPLACE CC: BK BU, GY, RD, WH, YE
C5EC-114CC-7	6 Foot	
C5EC-114CC-10	10 Foot	
C5EC-114CC-15	15 Foot	
C5EC-114CC-20	20 Foot	
C5EC-114CC-25	25 Foot	
CATEGORY 5E ASSEMBLIES - ECONOMY		
Catalog No.	Length	Jacket Colors
WP-66CC-3	3 Foot	REPLACE CC: 70- GRAY 72- BLUE 74- RED
WP-66CC-7	6 Foot	
WP-66CC-10	10 Foot	
WP-66CC-15	15 Foot	
WP-66CC-20	20 Foot	
WP-66CC-25	25 Foot	



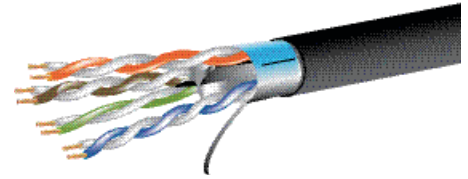
Patch Panels Category 5E

CATEGORY 5E PATCH PANELS	
Catalog No.	Description
12458MD-C5E	12 PORT CAT 5E PATCH PANEL 1.75 - 1RU
24458MD-C5E	24 PORT CAT 5E PATCH PANEL 1.75 - 1RU
48458MD-C5E	48 PORT CAT 5E PATCH PANEL 3.50 - 2RU
48458HD-C5E	48 PORT CAT 5E PATCH PANEL 1.75 - 1RU high density
24458S-C5E	24 PORT CAT 5E Shielded FTP PATCH PANEL 1.75 - 1RU
12458M-C5E	12 PORT MINI PANEL W/89D BRACKETS
12458H-C5E	12 PORT MINI HINGED PANEL
SMB-350	PANEL MOUNT CABLE MANAGEMENT

CAT6 & CAT6A CATEGORY CABLES

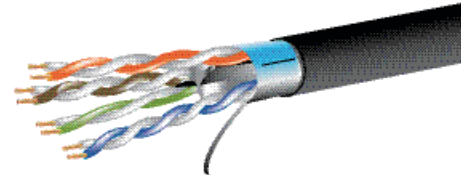
Cables

Category 6A and Category 6



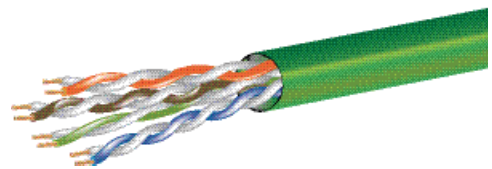
Category 6A F/UTP- Test to 750Mhz - 10G

Catalog No.	No. of Pairs	Conductor Type & Nom. D.C.R.	Insulation Type & Thickness	Shielding	Jacket Type & Thickness	Nom. O.D.	NEC Type	Nom. Capacitance & Impedance	Jacket Color
			Inches		Inches	Inches			
M58900	4 Pair	23 AWG Solid 24 Ω/Mft	Thermo-Plastic	F/UTP	PVC	.303	CMR	Nom. Cap. 14 pf/ft* Nom. Imp 100Ω	Black
M58892	4 Pair	23 AWG Solid 24 Ω/Mft	FEP	F/UTP	Plenum Thermo-Plastic	.305	CMP	Nom. Cap. 14 pf/ft* Nom. Imp 100Ω	Black



Category 6 F/UTP- Test to 550Mhz

Catalog No.	No. of Pairs	Conductor Type & Nom. D.C.R.	Insulation Type & Thickness	Shielding	Jacket Type & Thickness	Nom. O.D.	NEC Type	Nom. Capacitance & Impedance	Jacket Color
			Inches		Inches	Inches			
M58163	4 Pair	23 AWG Solid 24 Ω/Mft	Thermo-Plastic	F/UTP	PVC	.290	CMR	Nom. Cap. 14 pf/ft* Nom. Imp 100Ω	Black
M58183	4 Pair	23 AWG Solid 24 Ω/Mft	FEP	F/UTP	Plenum Thermo-Plastic	.280	CMP	Nom. Cap. 14 pf/ft* Nom. Imp 100Ω	Black



Category 6 UTP

Catalog No.	No. of Pairs	Conductor Type & Nom. D.C.R.	Insulation Type & Thickness	Shielding	Jacket Type & Thickness	Nom. O.D.	NEC Type	Nom. Capacitance & Impedance	Jacket Color
			Inches		Inches	Inches			
4246	4 Pair	23 AWG Solid 24 Ω/Mft	Polyolefin	None UTP	PVC	.220	CMR	Nom. Cap. 14 pf/ft* Nom. Imp 100Ω	GY, BL, WH, BK, GN
254246	4 Pair	23 AWG Solid 24 Ω/Mft	Flame Retardant Polyolefin/ FEP	None UTP	Plenum Thermo-Plastic	.225	CMP	Nom. Cap. 14 pf/ft* Nom. Imp 100Ω	GY, BL, WH, BK, GN

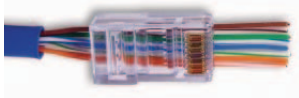
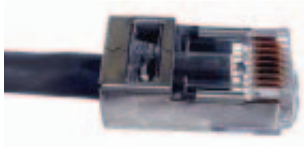
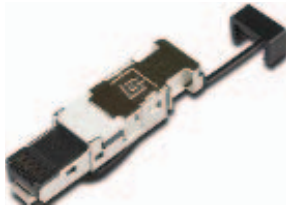
OTHER CAT 6 CABLES

M57622 - CAT 6 OUTDOOR

M58722- CAT 6 INDOOR/ OUTDOOR CM RATED

CAT 6 & CAT6A CONNECTORS

Modular Plugs Category 6A and Category 6



CATEGORY 6A F/UTP Modular Plug	
Catalog No.	Description
CN-1401405012	Cat6A F/UTP Modular Plug - Tool less Plug - 10G Transmission
CATEGORY 6 F/UTP Modular Plug	
CN-111590H34	Cat6 F/UTP Modular Plug
CATEGORY 6 UTP Modular Plug	
CN-6EZP	Cat6 UTP EZ Plug Modular Plug
CATEGORY 5E F/UTP Modular Plug	
32-EZSTP	Cat5E Shielded Modular Plug

Modular Plug Crimp Tool	
Catalog No.	Description
TL-EZRJ45	Modular Crimp Tool

RJ45 Jacks Category 6A and Category 6



CATEGORY 6A F/UTP Jacks	
Catalog No.	Description
KJS458TL-C6A	SignaMax RJ45 Cat6A F/UTP- 10G - Metal - Tool less
CATEGORY 6 F/UTP Jacks	
KJS458TL-C6C	SignaMax RJ45 Cat6 F/UTP- Metal - Tool less
CATEGORY 6A UTP Jacks	
KJS458MT-C6A-xx	SignaMax Cat6A Jack-10G- xx: WH, BK, BL, GY, GN, OR, RD, YE
CATEGORY 6 UTP Jacks - WPW	
AX101318	Cat6 RJ45 Jack - Gray
AX101319	Cat6 RJ45 Jack -Almond
AX101320	Cat6 RJ45 Jack - White
AX101321	Cat6 RJ45 Jack -Black
AX101323	Cat6 RJ45 Jack -Red
AX101324	Cat6 RJ45 Jack -Yellow
AX101325	Cat6 RJ45 Jack -Green
AX101326	Cat6 RJ45 Jack -Blue
CATEGORY 6 UTP JACKS - Tool less	
CN-706xx	Cat5E Toolless RJ45 Jacks - xx: BK, BL, GN, RD, YE, WH, OR

CAT6 & CAT6A ASSEMBLIES

Patch Cables

Category 6A and Category 6

Category 6A

CATEGORY 6A UTP ASSEMBLIES - SNAG-PROOF		
Catalog No.	Length	Jacket Colors
C6A-114CC-3FB	3 Foot	SIGNAMAX REPLACE CC: BK BU, GY, RD, WH, YE
C6A-114CC-7FB	6 Foot	
C6A-114CC-10FB	10 Foot	
C6A-114CC-15FB	15 Foot	
C6A-114CC-20FB	20 Foot	
C6A-114CC-25FB	25 Foot	



CAT6A F/UTP ASSEMBLIES - SNAG-PROOF		
Catalog No.	Length	Jacket Colors
C6AS-314GY-3FB	3 Foot	SIGNAMAX Color: Gray
C6AS-314GY-7FB	6 Foot	
C6AS-314GY-10FB	10 Foot	
C6AS-314GY-15FB	15 Foot	
C6AS-314GY-20FB	20 Foot	
C6AS-314GY-25FB	25 Foot	



Category 6

CATEGORY 6 UTP ASSEMBLIES - SNAG-PROOF		
Catalog No.	Length	Jacket Colors
C6C-114CC-3FB	3 Foot	SIGNAMAX REPLACE CC: BK BU, GY, RD, WH, YE
C6C-114CC-7FB	6 Foot	
C6C-114CC-10FB	10 Foot	
C6C-114CC-15FB	15 Foot	
C6C-114CC-20FB	20 Foot	
C6C-114CC-25FB	25 Foot	



CATEGORY 6 UTP ASSEMBLIES - Economy		
Catalog No.	Length	Jacket Colors
WP-4236CC-3	3 Foot	WPW REPLACE CC: BL, GY, WH
WP-4236CC-7	6 Foot	
WP-4236CC-10	10 Foot	
WP-4236CC-15	15 Foot	
WP-4236CC-20	20 Foot	
WP-4236CC-25	25 Foot	



CAT6 F/UTP ASSEMBLIES - SNAG-PROOF		
Catalog No.	Length	Jacket Colors
C6CS-314GY-3FB	3 Foot	SIGNAMAX Color: Gray
C6CS-314GY-7FB	6 Foot	
C6CS-314GY-10FB	10 Foot	
C6CS-314GY-15FB	15 Foot	
C6CS-314GY-20FB	20 Foot	
C6CS-314GY-25FB	25 Foot	



CAT6 & CAT6A PATCH PANELS

Patch Panels Category 6A

CATEGORY 6A UTP PATCH PANELS	
Catalog No.	Description
24458MD-C6A	24 PORT CAT 6A UTP PATCH PANEL 1.75 - 1RU
48458MD-C6A	48 PORT CAT 6A UTP PATCH PANEL 3.50 - 2RU
48458HD-C6A	48 PORT CAT 6A UTP PATCH PANEL 1.75 - 1RU
CATEGORY 6A UTP ANGLED PATCH PANELS	
24458A-C6A	24 PORT CAT6A UTP ANGLED 1.75" - 1RU
48458A-C6A	48 PORT CAT6A UTP ANGLED 3.50" - 2RU
CATEGORY 6A F/UTP PATCH PANELS	
24458S-C6A	24 PORT CAT6A F/UTP 10G - 1.75" - 1RU
48458S-C6A	48 PORT CAT6A F/UTP 10G - 3.50" - 2RU



Patch Panels Category 6

CATEGORY 6 UTP PATCH PANELS	
Catalog No.	Description
12458MD-C6C	12 PORT CAT 6 UTP PATCH PANEL 1.75 - 1RU
24458MD-C6C	24 PORT CAT 6 UTP PATCH PANEL 1.75 - 1RU
48458MD-C6C	48 PORT CAT 6 UTP PATCH PANEL 3.50 - 2RU
48458HD-C6C	48 PORT CAT 6 UTP PATCH PANEL 1.75 - 1RU
CATEGORY 6 UTP ANGLED PATCH PANELS	
24458A-C6C	24 PORT CAT6 UTP ANGLED 1.75" - 1RU
48458A-C6C	48 PORT CAT6 UTP ANGLED 3.50" - 2RU
CATEGORY 6 F/UTP PATCH PANELS	
24458S-C6C	24 PORT CAT6A F/UTP SHIELDED - 1.75" - 1RU
CATEGORY 6 UTP MINI WALL MOUNT PANELS	
12458M-C6C	CAT 6 MINI PANEL w/89D Bracket
12458MH-C6C	CAT 6 MINI PANEL Hinged



Cable Management

HINGED WALL MOUNT BRACKETS	
Catalog No.	Description
HWM-175	1 RMS 1.75"H x 6" D
HWM-350	2 RMS 3.50"H x 6" D
HWM-525	3 RMS 5.25"H x 6" D

DISTRIBUTION RINGS	
Catalog No.	Description
CMP-175-A	PANEL W 5 1.75"X3" RINGS 1 RMS
CMP-350-A	PANEL W 5 3"X3" RINGS 2 RMS
CMP-175-AD	PANEL W 5 1.75"X3" RINGS 1 RMS - 1.5"Wx4"H WIRING DUCT
CMP-350-AD	PANEL W 5 3"X3" RINGS 2 RMS - 3"Wx4"H WIRING DUCT

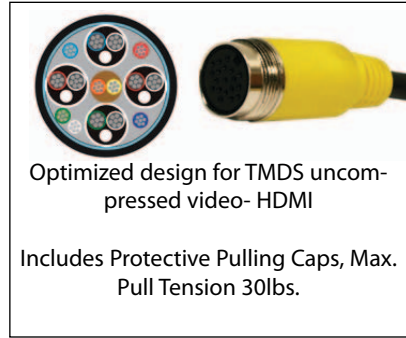


EZ RUN HDMI / DVI

Digital HDMI & DVI EZ Run Cables

EZ Run Cables- AV- Component Video	
CN-EZ01C-xx	Non-Plenum HDMI Replace xx with 15,25,35,50,75,100,125,150
CN-EZ02C-xx	Plenum HDMI Replace xx with 15,25,35,50,75,100,125,150

Notes: HDMI CABLE LENGTHS GREATER THAN 25 FT. WILL REQUIRE HDMI EXTENDERS



CN-EZHDMI-FP



CN-EZD19-FP

Single Gang EZ Run Wall Plates

EZ Wall Plates- Single Gang	
Catalog No.	Description
CN-EZD19-FP	DIN Wall Plate HDMI Video
CN-EZHDMI-FP	Wall Plate- HDMI
CN-EZDVID-FP	Wall Plate- DVI-D
CN-EZDVID35-FP	Wall Plate- DVI-D+3.5mm Audio
CN-EQL-FF-FA-B	Wall Plate- HDMI- Extender
CN-EQL-FF-B	HDMI Extender

Audio/Video Accessories Advantage EZ Run Installation

EZ Run Adapter Cables		
Dwg.No	Catalog No.	Description
1	CN-EZHDMI-xx	HDMI to D19- Ye
	CN-EZDVID-xx	DVI-D to D19- Ye
	CN-R013EQLMF-01	HDMI Extender Cable 1ft.Cable



1

