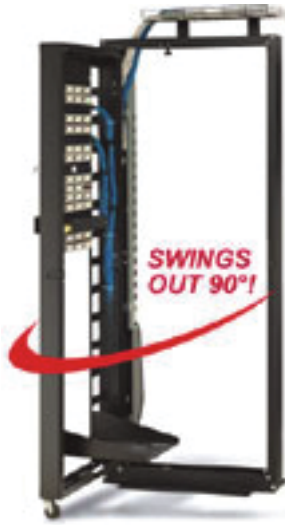


CABLE MANAGEMENT

Distribution Racks

Free Standing Swing Rack



| Catalog# | DESCRIPTION |
|----------|---|
| XSW-8419 | 84" Swing Rack 19" |
| XSW-0100 | Power Strip Mounting Kit (mounting kit only) Pwr. Strip ordered separately. |
| XSW-0200 | Wire Basket (Top Mount) mounting brackets and wire basket 2" H x 8" W x 24" L |

| Height | Weight |
|--------|--------|
| 84" | 179# |



Distribution Rack- Steel Knockdown 2 Post

| Catalog# | DESCRIPTION | Height | Weight | Mounting |
|--------------|---|--------|--------|----------|
| XDR-4819 | 48" Distribution Rack- Tapped front Rails | 48" | 34lbs. | 19" |
| XDR-7219 | 72" Distribution Rack - Tapped front Rails | 72" | 43lbs. | 19" |
| XDR-8419 | 84" Distribution Rack - Tapped front Rails | 84" | 50lbs. | 19" |
| XDR-8419-310 | 84" Distribution Rack -#10-32 tapped- 3 Channel w/angle base | 84" | 63lbs. | 19" |
| XDR-8423-310 | 84" Distribution Rack- #10-32 tapped - 3 Channel w/angle base | 84" | 70lbs. | 23" |
| XDR-8419-312 | 84" Distribution Rack- #12-24 tapped- 3 Channel w/angle base | 84" | 63lbs. | 19" |
| XDR-8423-312 | 84" Distribution Rack- #12-24 tapped - 3 Channel w/angle base | 84" | 70lbs. | 23" |

Distribution Rack- Steel Welded 2 Post

| Catalog# | DESCRIPTION | Height | Weight | Mounting |
|---------------|---|--------|--------|----------|
| XDR-8419-310W | 84" Distribution Rack -#10-32 tapped- 3 Channel w/angle base | 84" | 66lbs. | 19" |
| XDR-8423-310W | 84" Distribution Rack- #10-32 tapped - 3 Channel w/angle base | 84" | 73lbs. | 23" |
| XDR-8419-312W | 84" Distribution Rack- #12-24 tapped- 3 Channel w/angle base | 84" | 66lbs. | 19" |
| XDR-8423-312W | 84" Distribution Rack- #12-24 tapped - 3 Channel w/angle base | 84" | 73lbs. | 23" |

Distribution Rack- Steel Seismic 2 Post

| Catalog# | DESCRIPTION | Height | Weight | Mounting |
|--------------|---|--------|---------|----------|
| XDR-8419-610 | 84" Distribution Rack -#10-32 tapped- 6 Channel w/angle base | 84" | 105lbs. | 19" |
| XDR-8423-610 | 84" Distribution Rack- #10-32 tapped - 6 Channel w/angle base | 84" | 115lbs. | 23" |

Distribution Rack- Aluminum Post

| Catalog# | DESCRIPTION | Height | Weight | Mounting |
|----------|--|--------|--------|----------|
| BHRR194 | 84" Distribution Rack -#12-24 Tapped Black, Knockdown 3" channel | 84" | 30lbs. | 19" |
| BHR6194 | 84" Distribution Rack -#12-24 Tapped Black, Knockdown 6" channel | 84" | 41lbs. | 19" |
| BHRR234 | 84" Distribution Rack -#12-24 Tapped Black, Knockdown 3" channel | 84" | 32lbs. | 23" |

Vertical Cable Manager

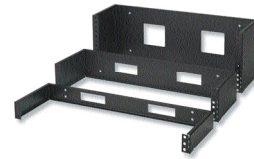
| Catalog# | DESCRIPTION |
|----------|--|
| XDR-7201 | 72" Vertical Cable Manager - Compatible with XDR-7219 |
| XDR-8401 | 84" Vertical Cable Manager |
| XDR-8403 | 84" Vertical Cable Manager double sided w/ Removable Cover |

CABLE MANAGEMENT

Cable Management

HINGED WALL MOUNT BRACKETS

| Catalog No. | Description |
|-------------|---------------------|
| HWB-175 | 1 RMS 1.75"H x 6" D |
| HWB-350 | 2 RMS 3.50"H x 6" D |
| HWB-525 | 3 RMS 5.25"H x 6" D |



DISTRIBUTION RINGS

| Catalog No. | Description |
|-------------|--|
| CMP-175-A | PANEL W 5 1.75"X3" RINGS 1 RMS |
| CMP-350-A | PANEL W 5 3"X3" RINGS 2 RMS |
| CMP-175-AD | PANEL W 5 1.75"X3" RINGS 1 RMS - 1.5"Wx4"H WIRING DUCT |
| CMP-350-AD | PANEL W 5 3"X3" RINGS 2 RMS - 3"Wx4"H WIRING DUCT |

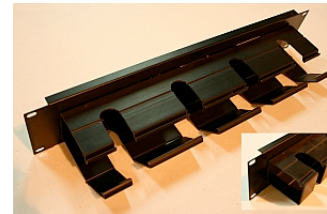


9510-1901



9512-1901

| Catalog No. | Description |
|--------------|---|
| 9510-1901 | 1RU 19" manager with rings |
| 9511-1902 | 2RU 19" manager with rings |
| 9512-1901 | 1U 19" manager w/finger stock w/arm 1.5"x3" |
| 9512-1902 | 2U 19" manager w/finger stock w/arm 3"x3" |
| 9512-1902-FR | 2U 19" manager w/finger Frt/Rr |
| 9512-1903 | 1U 19" Rack mount lacing bar |
| 9513-1902 | 2U 19" manager w/guide touch 2"x3" |
| BHH191UC | 1U 19" manager w/cover |
| BHH192UC | 2U 19" manager w/cover |
| BHH193UC | 3U 19" manager w/cover |



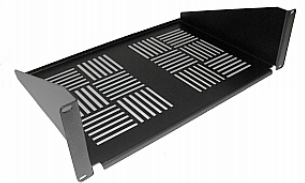
9513-1902

Enclosure Shelves

| Catalog No. | Description |
|--------------|--|
| 9010-1924 | 19" Heavy duty Adj. Vented, 4pt. Mtg, 24"D |
| 9010-1912 | 19" Vented flush mnt. cantilevered, 12"D |
| 9011-0918 | 19" Vented flush mnt. cantilevered, 18"D |
| 9011-1918-16 | 19" Vented flush mnt. cantilevered, 18"D, 25lbs LR |
| 9012-1918 | 19" Solid flush mnt. cantilevered, 18"D |
| 9012-1918-16 | 19" Solid flush mnt. cantilevered, 18"D, 25lbs LR |
| 9013-1924 | 19" HD Sliding Adj. vented, 4pt. Mtg, 24"D |
| 9015-1909 | 19" Sliding rotating keyboard |
| RMD2 | 2U Rackmount drawer, 19" Mtg. |
| RMD3 | 3U Rackmount drawer, 19" Mtg. |
| RMD4 | 4U Rackmount drawer, 19" Mtg. |
| RMD5 | 5U Rackmount drawer, 19" Mtg. |
| XMEW22 | 1 Bay 22" Front mount work surface |
| XMEW22 | 1 Bay 22" Front mount work surface |



9010-1924



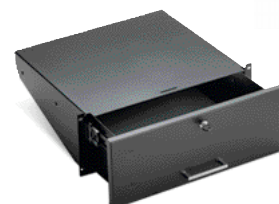
9010-1912



9012-1918



9013-1924

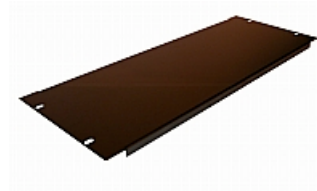


RMD3

CABLE MANAGEMENT

Filler Plates 19"

| Catalog No. | Description |
|-------------|-----------------------------------|
| 9910-0100 | 1U 19" Solid filler panel - Black |
| 9911-0200 | 2U 19" Solid filler panel - Black |
| 9912-0300 | 3U 19" Solid filler panel - Black |
| 9913-0400 | 4U 19" Solid filler panel - Black |



Lighting Kits

| Catalog No. | Description |
|-------------|--|
| 9420-1906 | 19" RM Single Adm. 5W halogen w/dimmer |
| 9420-1905 | 19" RM Dual Adm. 5W halogen w/dimmer |



Hardware

| Catalog No. | Description |
|-------------|------------------------------------|
| 8911-0100 | 10-32 Mounting screws- pkg.50 |
| XBS-11-0011 | Groundng strap kit- 11" |
| XBX-18-0011 | Groundng strap kit- 18" |
| XMERSB | Seismic anchor bracket kit |
| XMEBK01 | Bolt together kit |
| XMEEG01 | Edge guard kit |
| XMFCTM | Quick mount w/fastners 10pc. |
| XCTV12 | Vecro 12" L hook and loop 10pc/kit |
| XCTV18 | Vecro 18" L hook and loop 10pc/kit |
| XCTV24 | Vecro 24" L hook and loop 10pc/kit |
| XMESVC | Side vent cover |
| XMEFVC | Front vent cover |

